



# **RE-THINKING AUTHORIZED DATA OPENNESS:** functioning of national geoportals during martial law

**Dmytro Makarenko**  
**State Service of Ukraine for Geodesy, Cartography and Cadastre**

**08 of June 2023, Gävle, Sweden**



- **StateGeoCadaastre: key responsibilities and martial law restrictions**
- **NSDI and geoportal operation during the war time**
- **E-Cartographic Fund of Ukraine**
- **State Land Cadastre of Ukraine during the war**
- **Security of SLC data under martial law**
- **Priorities and support for further development**

## KEY DOMAINS OF RESPONSIBILITY:



**Topography, geodesy, mapping**



**State Land Cadastre**



**Spatial Data Infrastructure**



**Land use & protection**

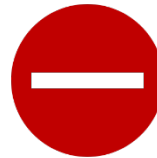


**Control for land use**

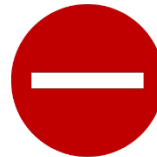


**Administrative services**

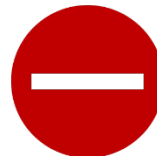
- ☐ The Martial Law from February 2022
- ☐ Resolution of the Cabinet of Ministers of Ukraine "Some issues of ensuring the functioning of information and communication systems, electronic communication systems, public electronic registers under martial law" № 263 dated 12.03.2022
- ☐ Resolution of the Cabinet of Ministers of Ukraine "Some Issues of Maintaining and Functioning of the State Land Cadastre under Martial Law" № 546 dated 07.03.2022



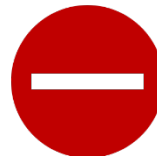
**Public Cadastre Map closed for the open access**



**State Geodetic Network Geoportal closed for the open access**



**NSDI Pilot Geoportal closed for open access**



**Geoportal of other central and local data holders**



## Main provisions:

- **All geospatial data are open, free and in public access**
- Definitions of "core" and "profile" data are given
- Annexes with INSPIRE data sets are included
- Geospatial data will be in the format in which they were created
- In accordance with INSPIRE services will be provided
- The administrator collects metadata, administers the NSDI geoportal and **provides easy data search/access**
- **Data holders are obliged to promulgate geospatial data at their websites/geoportals**



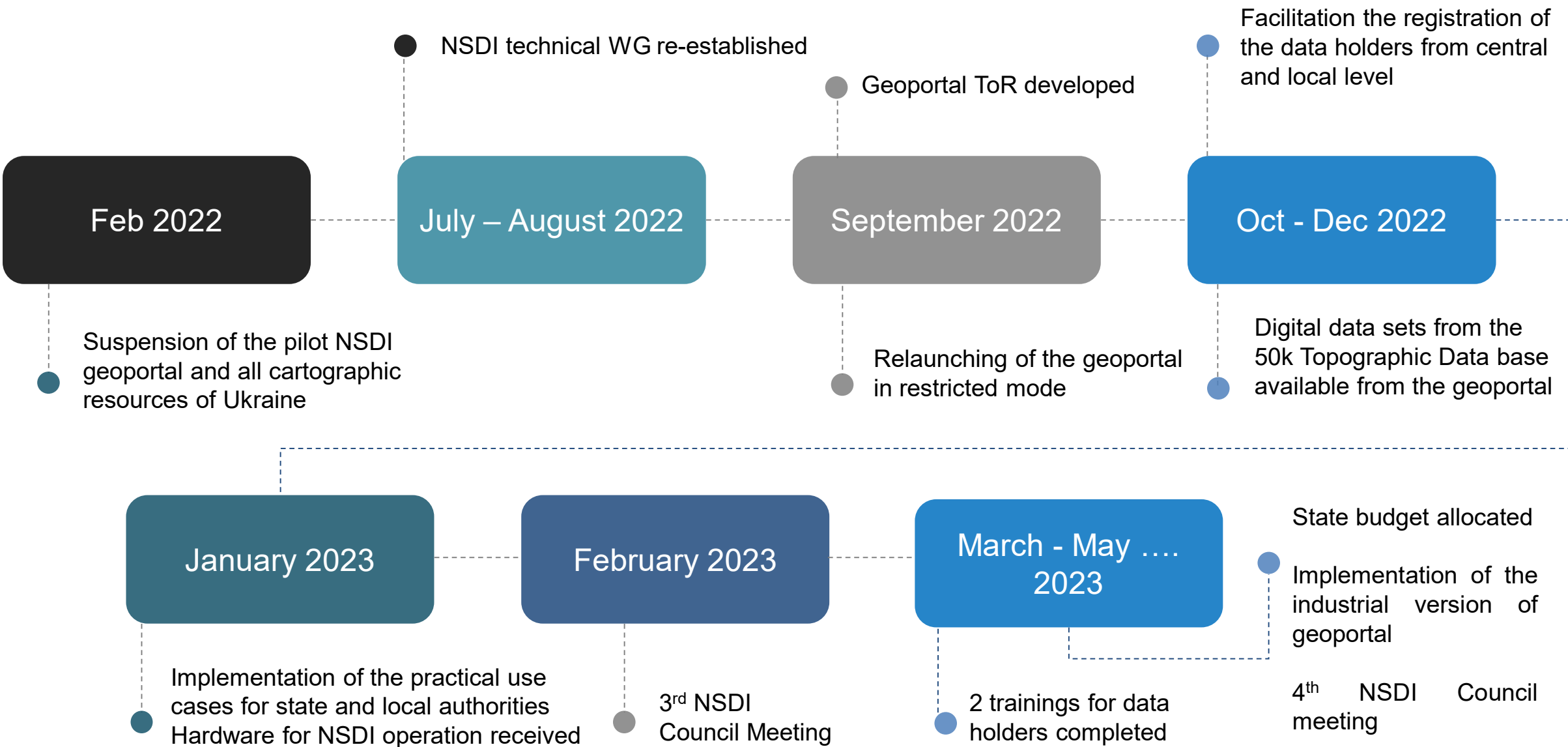
### NSDI creation means:

- To comply with INSPIRE and open data EU Directive
- Free georeferenced data



### NSDI creation **DOESN'T** mean:

- To collect all data in single register
- To change the usage mode of geospatial data
- Changing the use of geospatial data



**2020** ➤ Pilot Project Implementation

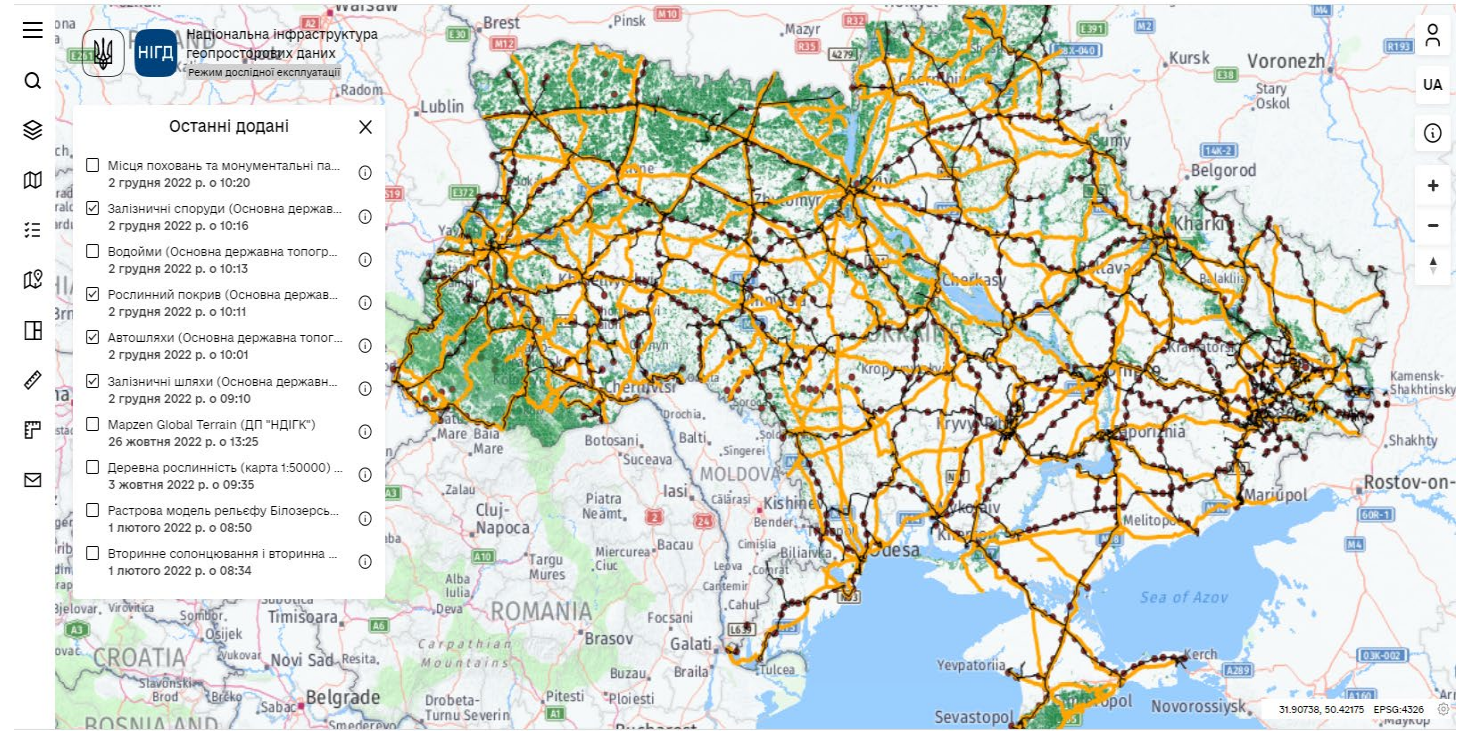
**2021** ➤ Launch of the NSDI Pilot Project Geoportal



[WWW.NSDI.GOV.UA](http://WWW.NSDI.GOV.UA)

**2022** ➤ Switching the Geoportal to a closed mode

**2023** ➤ Interaction between the information systems of the State Land Cadastre and the NSDI Pilot Project



## USERS VERIFICATION

**1000+ verified users as of 25.05.2023**

- ✓ central executive bodies – 16
- ✓ regional state administrations – 21
- ✓ amalgamated territorial communities – 1026



## USERS OF THE GEOPORTAL:

<b>16</b>	Central Executive Authorities (66%)	<u>NATIONAL LEVEL</u>
<b>21</b>	Oblast State Administrations (60%)	<u>REGIONAL LEVEL</u>
<b>1021</b>	Territorial communities (67%)	<u>LOCAL LEVEL</u>

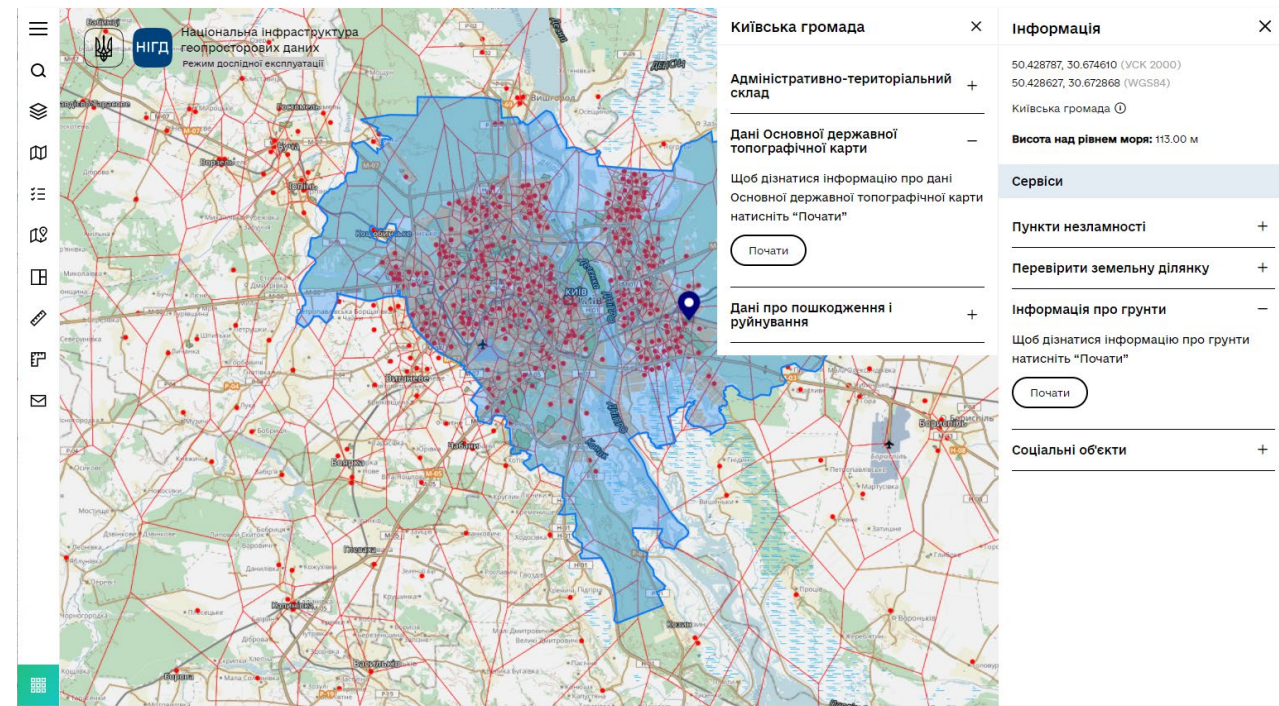
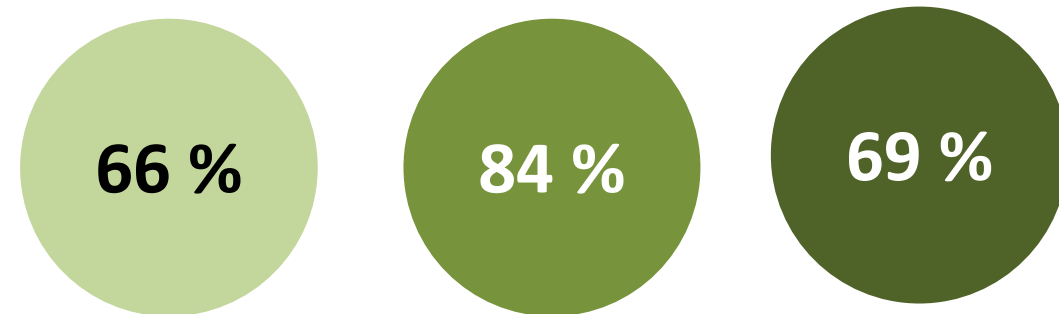
## DATA OF THE GEOPORTAL:

**20+** national wide data sets  
(available from the updated Main state topographic 50k map)  
Geoportals of the data holders **are restricted** for the public use

## PRACTICAL USE CASES WITH THE DATA:

Technical capabilities for making management decisions using NSDI data have been introduced by the principle:

- ❑ nationwide data for the entire territory of the country  
(territorial units, occupied or blocked areas, points of invincibility, land boundaries)
- ❑ spatial analysis of information in a point  
(community passport, soils, buffer zone for invincibility points, land parcel check, buffer zone for social objects, damages)





# Державний картографо- геодезичний фонд України

## KEY PURPOSES

### INTERACTION WITH DEVELOPERS

of topographic and geodetic, cartographic  
information and remote sensing data

### TRANSFER OF INFORMATION AND DATA

to the State Cartographic Fund

## 2023



### LAUNCH OF THE TRIAL OPERATION MODE



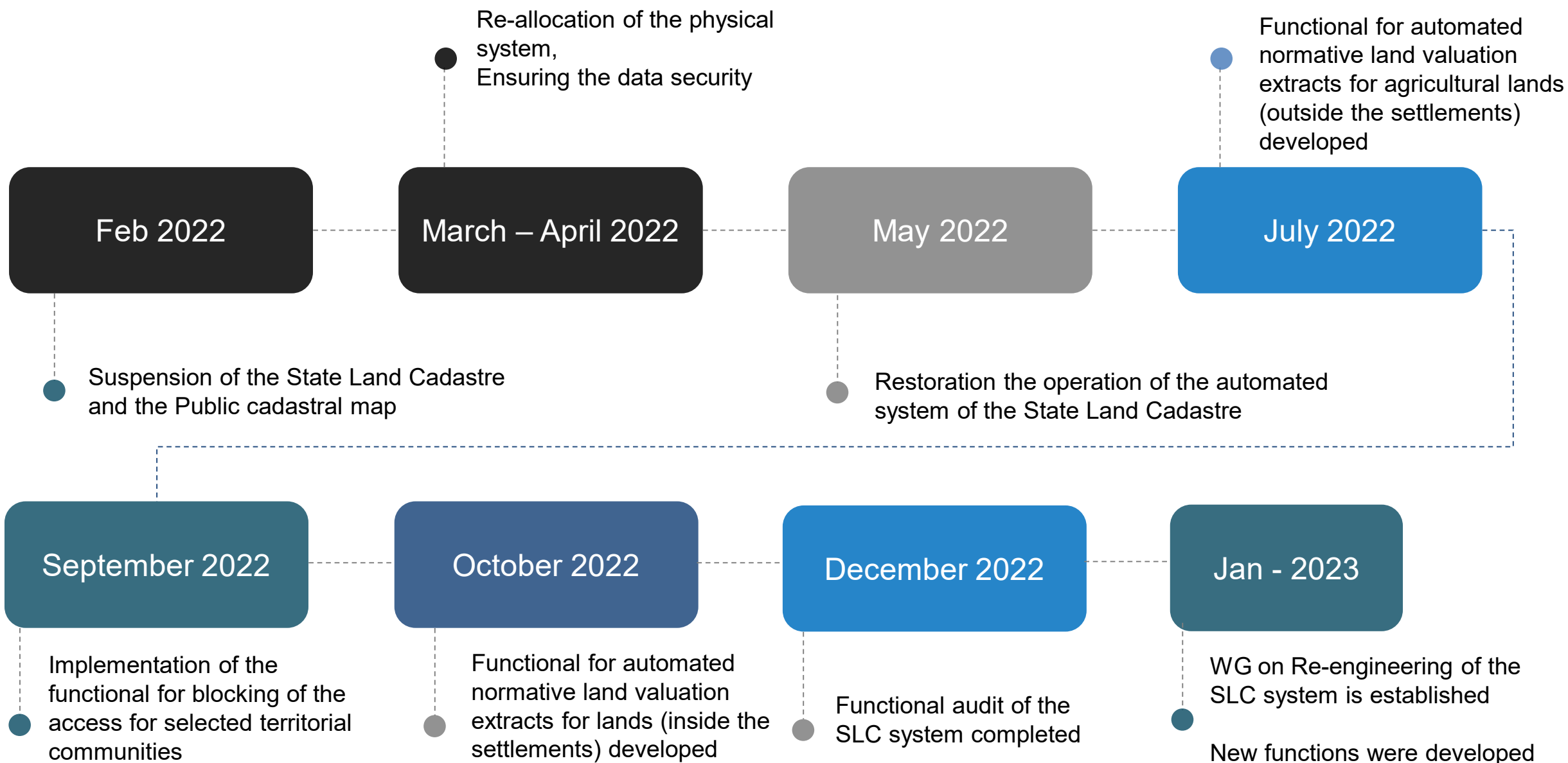
[WWW.KARTFOND.LAND.GOV.UA](http://WWW.KARTFOND.LAND.GOV.UA)

## OUTCOMES

Providing validated topographic,  
geodetic and cadastral data

Saving budgetary funds for  
replication during the creation of  
such materials

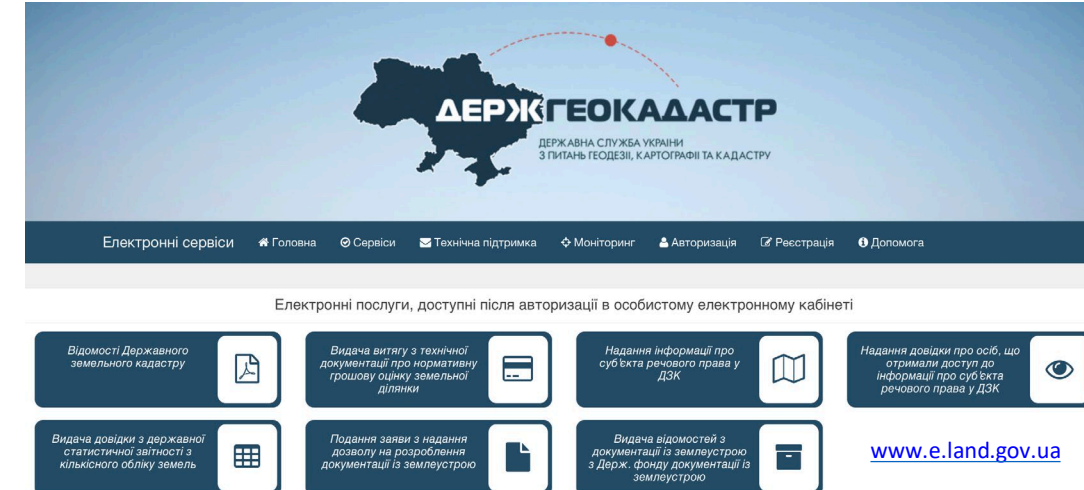




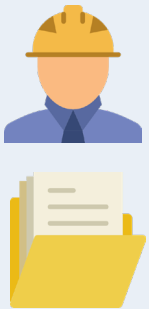
Portal of E-services – has been operational during martial law

Exterritorial approach – is the key principle of the land registration

## The business process of the extraterritorial service:



Supply of the documents or request for the service



Center of Administrative Services



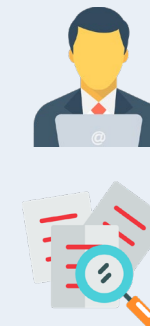
OR



Portal of E-Services



Automated system randomly choose any of the cadastral registers to fulfill the service



Ready service (extract, registration, etc) is sent to the Centre of Admin Services or to email



**Restriction of public access to data restrains the development on national and local level**

**Data integration, especially with SLC, is crucial for i) E-construction system, ii) de-mining projects, iii) taxation system**

**Data integration in close protected mode with SLC has been established with the key stakeholders**



**Public cadastral map will be closed until the Martial Law is active NSDI pilot geoportal will be restricted until the Martial Law is active**



**NSDI council suggestions on changes to the NSDI legislation on re-thinking of the open data approach were taken onboard**

**Data security and hardware sustainability are core priorities for SGC**

# STATEGEOCADASTRE

DIGITALIZATION ▪ DEREGULATION ▪ DE-SHADOWIZATION

## THANK YOU FOR ATTENTION!

Dmytro Makarenko,

Deputy Chairman of the StateGeoCadastre



[makarenko@land.gov.ua](mailto:makarenko@land.gov.ua)  
[d.makarenko89@gmail.com](mailto:d.makarenko89@gmail.com)